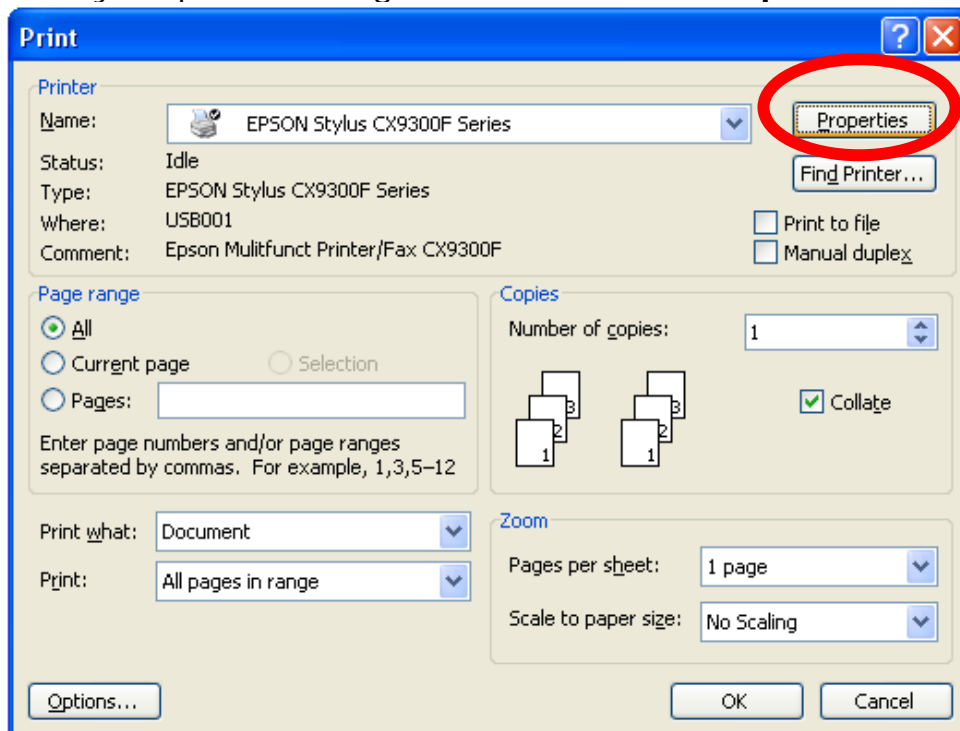
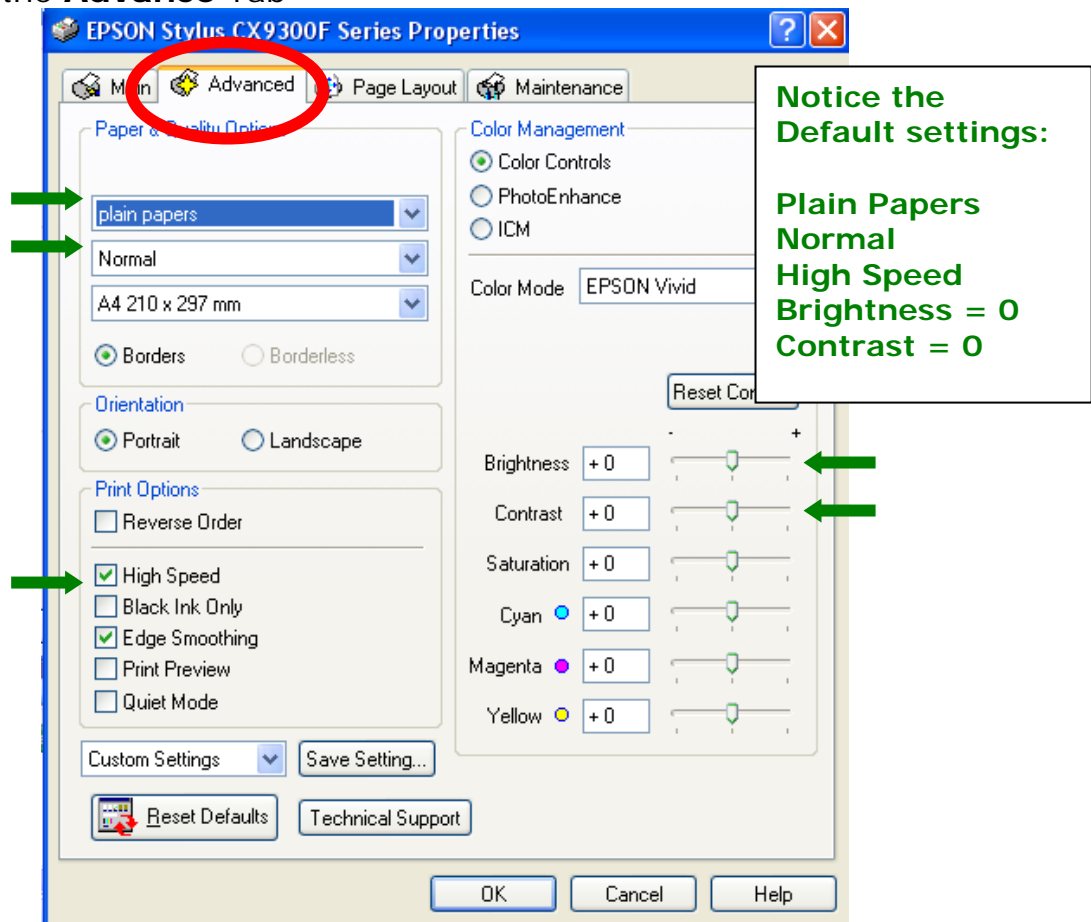


## Setting Your Printer to make great paper positives

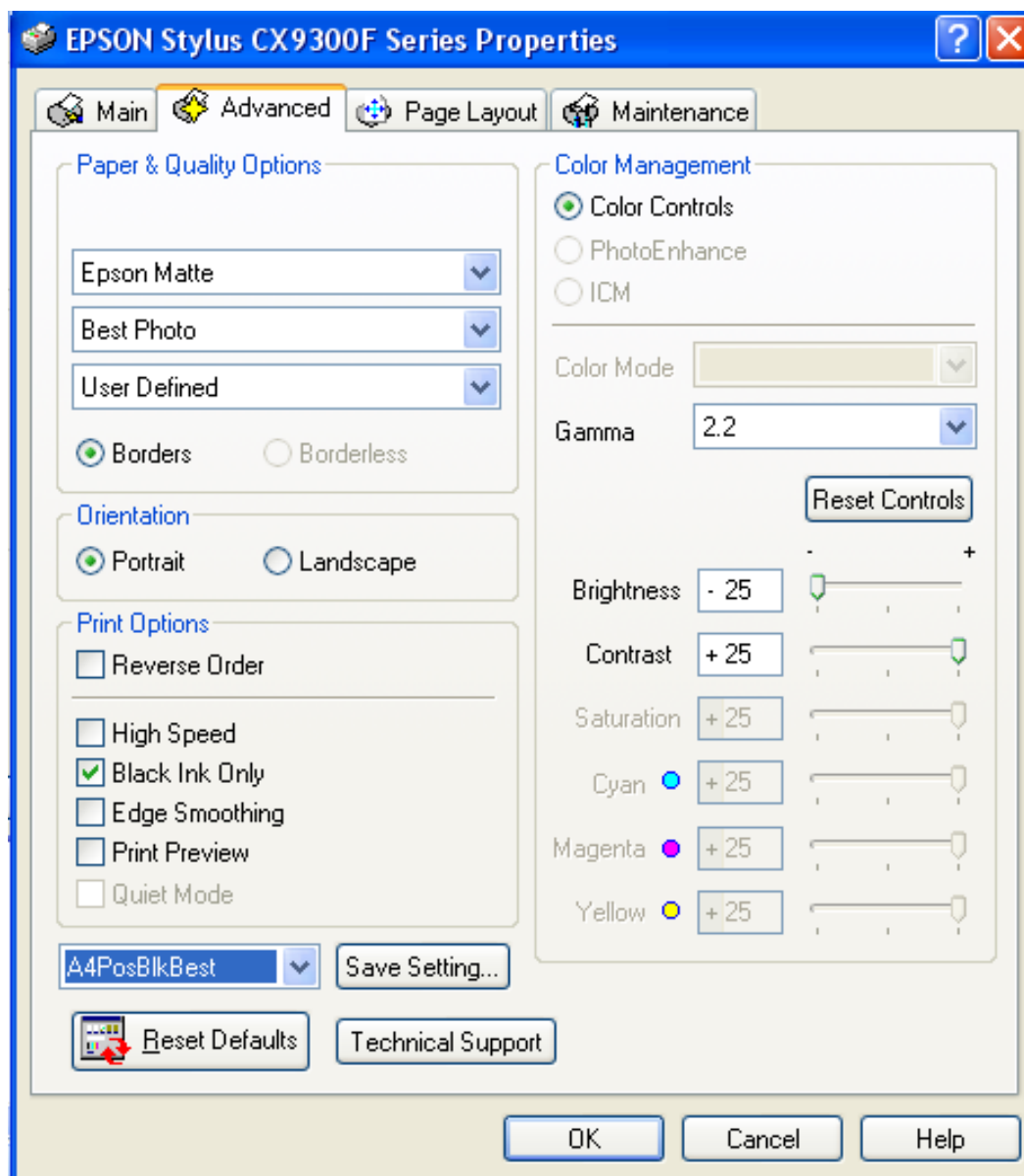
Go to your printer dialogue box, and select **Properties**



Select the **Advance** Tab



Change the settings to give you the DARKEST and SLOWEST print, in order to lay down enough ink on the paper as possible. Notice that 'matt papers' has been selected below, we are only printing on plain paper but the matt setting puts down more ink.



The **Brightness** has been changed to ensure that the Dark areas are as dark as possible.

The **Contrast** has been changed to make the difference between the light areas and dark areas are as great as possible.